



Enjoy your own
professional laundry.

HEAVY PROFESSIONAL LAUNDRY

ECOVOLUTION
by **DOMUS**

 **DOMUS**

INDEX



PRESENTATION
HEAVY PROFESSIONAL
LAUNDRY

04

DESIGNED FOR YOUR
BUSINESS

06

WASHER
EXTRACTORS

10

TUMBLE
DRYERS

14

TECHNICAL
DATA

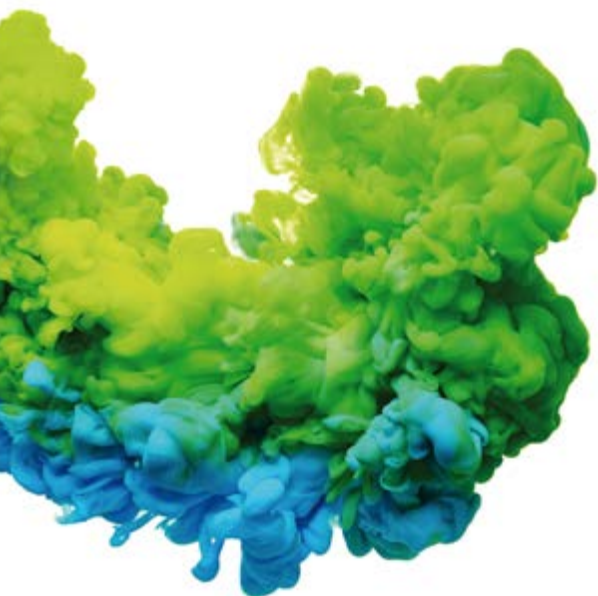
18

Heavy Professional Laundry

Heavy Professional Laundry, specifically designed for your own business. A range tailored to meet the needs of your professional activity.

Heavy Professional Laundry is Domus' answer to the needs of a different client. A customer that demands equally robust, programmable, efficient and environmentally friendly machines, like the industrial models. The machines offer identical benefits but with greater versatility, a more manageable size and a more affordable price. Perfectly equipped to give you a quality, fast, flexible and economic service. Just the one you need.

Welcome to Heavy Professional Laundry.





HPW - HEAVY PROFESSIONAL WASHERS | G FACTOR 450

CONTROL TYPE	HEATING	CAPACITY			
		8 kg		10 kg	
TOUCH II Programmable Control	Electric - HW	Valve HPW-8 V TOUCH II	Pump HPW-8 P TOUCH II	Valve HPW-10 V TOUCH II	Pump HPW-10 P TOUCH II



HPD - HEAVY PROFESSIONAL TUMBLE DRYERS

CONTROL TYPE	HEATING	CAPACITY	
		8 kg	10 kg
TOUCH II Programmable Control	Electric	HPD-8 TOUCH II E	HPD-10 TOUCH II E
	Gas	HPD-8 TOUCH II G	HPD-10 TOUCH II G
ELECTRONIC CTRL M	Electric	HPD-8 M E	HPD-10 M E
	Gas	HPD-8 M G	HPD-10 M G
ELECTRONIC CTRL M	Electric Gas		HPDL-10 M E TRIF.
			HPDL-10 M E MONO.
			HPDL-10 M G
TOUCH II Programmable Control	Heat pump	HPD-8 TOUCH II HPi	HPD-10 TOUCH II HPi



Soon

Heating codes
E = ELECTRIC
HW = HOT WATER
G = GAS
HPi = HEAT PUMP

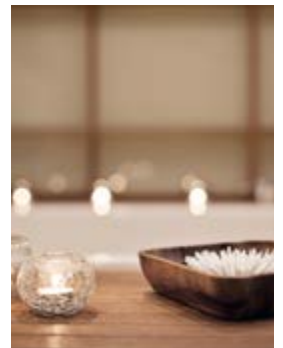
Drain Codes
V = VALVE
P = PUMP

NOTE: All models can be easily converted to coin mode, with a coin kit, token kit or for central pay, etc.

OPL APPLICATIONS

ESPECIALLY DESIGNED
FOR YOUR BUSINESS

- HAIRDRESSERS
- WET CLEANING
- GYM
- COUNTRY HOUSES /
HOSTELS
- BED & BREAKFAST
- SPA
- BEAUTY SALONS
- FACILITY SERVICES
(MOPS)
- CARE HOMES
- LABORATORIES
- CLINICS
- NURSERIES
- SMALL INDUSTRIES



COIN APPLICATIONS

ESPECIALLY DESIGNED
FOR YOUR BUSINESS



COIN
LAUNDRIES

COLLEGES &
UNIVERSITIES

CLEAN + US FOR
HOTELS

APARTMENTS

CAMPINGS

HOSTELS

COMMUNITIES





WASHER EXTRACTORS



The new Heavy Professional Washers by Domus represent a revolution thanks to their technologically advanced and varied industrial characteristics.

- ✓ High spin washer extractor. Soft mounted.
- ✓ G Factor 450.
- ✓ Grey skinplate body. AISI 304 Stainless steel drum and tub.
- ✓ Detergent manual dispenser with 4 compartments.
New soap box on top as option.
- ✓ 8 signals for automatic liquid dosing, programmable in time and delay. Plus 6 extra signals as option.
- ✓ 2 water inlets (hot and cold).
- ✓ These machines have electronic control of imbalance with frequency inverter, that detects the unbalanced load before spinning. Standard frequency: 50 - 60 Hz.
- ✓ TOUCH II microprocessor with touch screen. 20 preset programs.
- ✓ Possibility of programming, exporting and importing programs without limit and software updates, through a USB drive.
- ✓ DOMUS CONNECT: the IOT solution easy and free to manage the laundry, monitor machines, etc. from the cloud.
- ✓ Telemetry standard: All washing process (temperatures, water levels) is stored in the washer and can be extracted to a PC by means of a USB drive.
- ✓ WET CLEANING: available with TOUCH II to create the best programs. Fully adjustable water levels and washing speed for delicate garments.
- ✓ OPTIMAL LOADING standard to optimize water and chemicals consumptions.
- ✓ LOADING AID feature with water and rotation control for easy loading of the linen.
- ✓ Model with drain valve and model with drain pump.
- ✓ Valve models especially designed for washing mops.
- ✓ Models easily transformable from OPL to coin laundry and viceversa.
- ✓ Leveling feet included.
- ✓ CE and WRAS approved.

Top soap box



DOMUS CONNECT



- ✓ IoT connection is easy and free, standard in all TOUCH II ranges.
- ✓ You can get information from the cloud to your device like telemetry, statistics and data for an accurate analysis, to ensure the MAXIMUM HYGIENE.



LOW WATER CONSUMPTION

- ✓ A standard washing program consumes less than 7 litres of water per kg and cycle

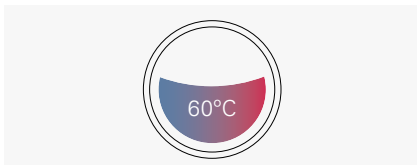


AUTOMATIC WATER MIXER

Precise mixing of different water temperatures, thanks to an accurate temperature sensor on the drum.

ADVANTAGES

- ✓ Energy savings.
- ✓ Reduced Washing Time.



OPTIMAL LOADING

Automatic adjustment of water and soap consumptions as well as energy savings according to the load, which is measured by the washer. Possibility to indicate manually, loaded weight.

ADVANTAGES

- ✓ Energy savings.
- ✓ Water savings.
- ✓ Chemical savings.



TELEMETRY

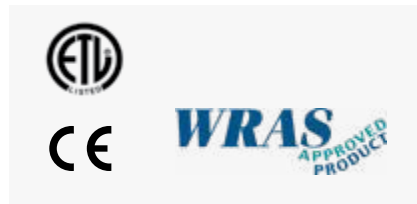
All washing process (temperatures, water levels) is stored in the washer and can be downloaded from USB port or by means of IoT - Domus Connect.

ADVANTAGES

- ✓ Maintains customer's trust and confidence.
- ✓ Data for liability claim protection.
- ✓ Data integrity.
- ✓ Responds quickly in case any malfunction.

CERTIFICATES AND HOMOLOGATIONS

WRAS approvals (UK), ETL certificate (USA and Canada), CE., EAC.



SOAP DOSING SYSTEM

Water ducts, as well as easy detergent connection comply with the WRAS certification.

Rear connections for automatic liquid dosing. Up to 8 dosing signals (option 6 extra signals).

ADVANTAGES

- ✓ Accurate dosing (time and delay).
- ✓ Up to 14 dosing signals.



IMBALANCE DETECTION SYSTEM

Thanks to an advanced technological development, and by means of the inverter, the washers detect the imbalance at an early stage.

ADVANTAGES

- ✓ Operation is much smoother, making components long-lasting.
- ✓ Reduced Washing Time.
- ✓ Energy savings.

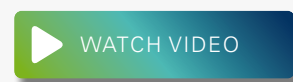
OPTIONS

- ✓ **Double drain kit:** Allows the recovery of the water, with important savings.
- ✓ **Drain pump kit:** Helps to drain water in cases when the drain is in an upper position than the floor.
- ✓ **Normally closed valve:** In case of any electric failure, water will be held inside the drum.
- ✓ **Maritime voltage (440-480/III/50-60 Hz/no neutral):** Most of washer models are ready to be installed on a vessel or oil rigs.
- ✓ **6 extra signals for liquid dosing:** Up to 14 dosing signals.
- ✓ **Silicone gasket on door:** Ideal for oily spots.
- ✓ **Reversible door:** Allows to adjust the opening sense of the door as desired or needed.
- ✓ **Automatic unlock device:** Allows to open washer door in case of electric failure.
- ✓ **Stainless steel AISI-304 outer casing:**
 - Elegant look.
 - Increased resistance to external agents.
 - Avoids corrosion problems.
 - Lengthens the washer lifetime.
 - Better quality.



ACCESSORIES

- ✓ **Plinth for better ergonomics.**
- ✓ **Plinth for mops (filter included)**
Only available for valve models:
 - Special washing programs for mops.
 - Plinth-Base for filtering after drainage.
- ✓ **Plinth for water recovery (tank included):**
 - Plinth-Base for water recovery.



4⁺ STRENGTHS



VERSATILITY

OPL < > COIN

Standard model easily transformable.

ELECTRIC < > HOT WATER

Standard Electric model easily transformable to hot water model.

PUMP < > DRAIN VALVE

Standard model easily transformable.

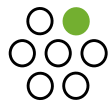
Easy access and service.

SINGLE < > STACKED

Standard model easily stackable with a dryer.

All models prepared for the Wet Cleaning system.

Suitable for many sectors: restaurants, gyms, campings, mop cleaning, apartments, coin laundries, dry cleaners, nurseries...



OUTSTANDING FEATURES

High G-FACTOR 450.

User-friendly and totally programmable Touch II microprocessor with a 4,3 touch screen.

8 dosing signals as standard.

USB Connection
Online platform free of charge for programming, telemetry, data analysis...

Telemetry standard: all washing process (temperature, water levels) is stored in the washer and can be extracted by USB.

Wet cleaning standard with the Touch II: water levels and speed are modifiable.

DomusConnect - free standard connectivity.

Multi-payable systems.

Short Washing cycles (Heating Power 6 kW).

Options:
Silicone gasket, delayed opening in case of electric power cut, normally closed valve, maritime voltage.



EFFICIENCY

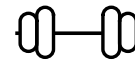
Intelligent weighing system.

Optimal loading: standard in all washers, for manual indication of the load weight.

Plinth for water recovery (with tank included).

Plinth for mops (filter included) only valve models.

High G-FACTOR 450
Reduced residual moisture > reduced drying time.



ROBUSTNESS

Outer casing in grey skinplate.

Robust aluminium door.

AISI 304 Stainless steel made inner drum, outer drum and ribs.

No inner drum seal (muffle), easy to repair and clean.

Industrial house bearing and bearings (up to 20.000 working hours) and possibility to replace bearings.

Same motor and inverter as industrial washers.

Industrial and heavy duty doorlock.

Option:
Stainless Steel AISI-304 panels.





40°C
60°C
90°C
EDGEENERGY

DOMUS



TUMBLE DRYERS



The new Heavy Professional Dryers by Domus couple perfectly with our washers as they offer a series of industrial, versatile, robust and efficient features that guarantee a highly competitive tumble dryer in terms of offering a most efficient drying cycle.

- ✓ Heavy professional tumble dryers 8 and 10 kg.
- ✓ Robust construction, grey skinplate panels. White painted panels for HPDL-10 M model.
- ✓ Industrial aluminium door with large diameter.
- ✓ TOUCH II microprocessor models, 4,3" touchscreen, programmable. Transformable to coin laundry version.
- ✓ WET CLEANING: available with microprocessor TOUCH II to create the best programs for delicate linen. Fully adjustable temperatures (drum inlet and outlet) and create programs by phases.
- ✓ Digital M programmer, also transformable to coin laundry version.
- ✓ DOMUS CONNECT: the IOT solution easy and free with TOUCH II to manage the laundry, monitor machines, etc. from the cloud.
- ✓ USB port in TOUCH II models, to program, import, export, manage and monitor.
- ✓ Versatile machine, same model for coin and OPL.
- ✓ Stackable on top of a HPW washer or on another HPD dryer, with control panels between both drums (except HPDL-10 M model).
- ✓ FULL SCREEN FILTER Wide fluff filter drawer, not in the door.
- ✓ Electric heating with two possible configurations: 4.5 or 6.75 kw. ESSENTIAL model is 4,5 kw.
- ✓ Easy access to components for easy maintenance.
- ✓ New gas heated models both with TOUCH II and M.

Models HPDL-10 M
electric and gas heated



CONTROLS

Microprocessor TOUCH II user friendly and fully programmable with a 4,3" touch screen.

M Programmer: selection of time and temperature, user-friendly and versatile (OPL or coin laundry version).



TOUCH II MICROPROCESSOR

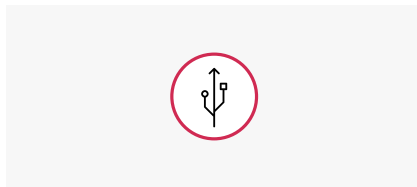
AXIAL AIRFLOW

It increases the efficiency of all drying process, thanks to the airflow inside the drum.



USB PORT

Possibility of programming, exporting and importing new programs (by USB port).



CERTIFICATES

CE certificate.



DOMUS CONNECT



✔ IoT connection is easy and free, standard in all TOUCH II ranges.

✔ You can get information from the cloud to your device like telemetry, statistics and data for an accurate analysis, to ensure the MAXIMUM HYGIENE.



TELEMETRY

All drying process is stored in the dryer and can be downloaded from USB port or by means of IoT - Domus Connect.

ADVANTAGES

- ✔ Maintains customer's trust and confidence.
- ✔ Data for liability claim protection.
- ✔ Data integrity.
- ✔ Responds quickly in case any malfunction.

STACKABLE WASHER AND DRYER

The dryers can be stacked on top of a washer or another dryer.



WASHER EXTRACTOR / TUMBLE DRYER

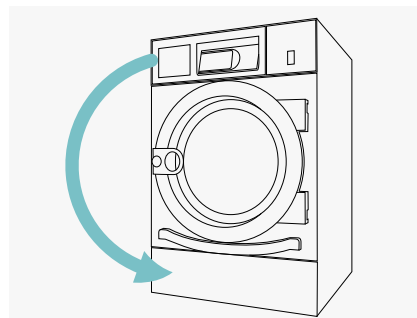
FLUFF FILTER

The filter is a drawer, not in the same door. More efficiency in drying. Better ergonomics: easy to clean.



OUTER CASING

Grey skinplate panels, stainless steel look. Elegant look. Stamped front and side panels (except HPDL-10)



OPTIONS

- ✔ Model transformable to coin laundry version.
 - ✔ Stackable on top of a HPW washer or on another HPD dryer, with control panels between both drums.
 - ✔ AISI 430 stainless steel panels.
 - ✔ EFFICIENT DRY humidity control in TOUCH II model.
- [WATCH VIDEO](#)
- ✔ Plinth for better ergonomics.
 - ✔ Other voltages and frequencies

4⁺ STRENGTHS



VERSATILITY

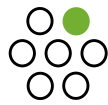
OPL <> COIN
Standard models can be programmed as OPL or coin laundry version, central pay, etc.

SINGLE <> STACKED
Models can be stacked on top of a washer or on another dryer.

Control panel can be assembled in a lower side and lower panel on the top for better ergonomics using a dryer stacked with a washer.

Ideal for multiple solutions: hotels, hostels, campings, coin laundries, facility services (mops), gyms, etc.

New gas heated models both with TOUCH II and M.



OUTSTANDING FEATURES

TWO CONTROLS:
TOUCH II: User friendly and fully programmable microprocessor with a 4,3" touch screen.

M PROGRAMMER: selection of time and temperature, user-friendly and versatile (OPL or coin laundry version).

DomusConnect - free standard connectivity with TOUCH II.

USB port.

Reduced drying times (less than 45 minutes). 6,75 kw heating, option 4,5 kw. ESSENTIAL model only 4,5 kw.

Multiple options: plinth, humidity sensor, etc.



EFFICIENCY

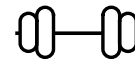
New range: HEAT PUMP MODELS.

EFFICIENT DRY: humidity sensor (only with TOUCH II).

Optimised airflow.

Wide fluff filter.

Efficient design.



ROBUSTNESS

Outer casing in grey skinplate. White painted panels in HPDL-10 model.

Robust aluminium big door.

DRAWER AS FLUFF FILTER

Not in the door but a specific drawer.

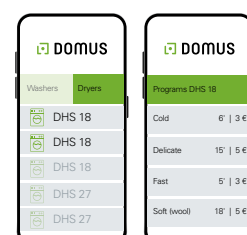
Industrial fan and powerful airflow.

Sturdy construction of the dryer structure and panels.

APP for coin laundries



DOMUSLAUNDRY



HEAT PUMP TUMBLE DRYERS

THE HEAT PUMP RANGE IS
UNIQUE IN FEATURES AND
EFFICIENCY

VERSATILE

Suitable for many businesses.

MANY USES AND OPTIONS

- ✔ OPL laundries (spa, hairdresser's, apartments, and many small businesses).
- ✔ Vended: coin laundries.
- ✔ Wet cleaning shops.
- ✔ Easy to transform, for any sector.

EASY OPERATION

- ✔ Ergonomics.
- ✔ Short drying times.
- ✔ Reverse drum action standard.
- ✔ Humidity control standard.
- ✔ Wide environmental temperature range: 6°C to 46°C.

EASY INSTALLATION

NO EXTRACTION

- ✔ Heavy professional heat pump dryers do not need exhaust to the exterior.
- ✔ No need of refrigeration water.

COMPACT DIMENSIONS

- ✔ Heat pump set in the plinth.

LOW CONSUMPTION

- ✔ The heat pump dryer consumes 1/5 of the installed power compared to an electric equivalent dryer.
- ✔ Multitension 230/400V 50/60 Hz.

EASY MAINTENANCE

EASY FRONT ACCESS TO HEAT PUMP SET

- ✔ In the plinth.
- ✔ No need of refrigeration water, no maintenance.
- ✔ Type of gas: 410 A.





EFFICIENCY

ECO-ENERGY

The most efficient in terms of consumptions and installed power

LOW POWER

- ✓ The heat pump dryer consumes 1/5 of the installed power compared to an electric equivalent dryer.

EFFICIENCY

- ✓ It uses less than half kw / litre of evaporated water.

OPTIMIZED CYCLE TIME

- ✓ Full load of cotton linen 45% residual moisture.

Full load of 100% cotton towels

Professional heat pump dryer → **70 minutes**

60% load, 50% polyester
50% cotton towels



Professional dryer → **35 minutes**

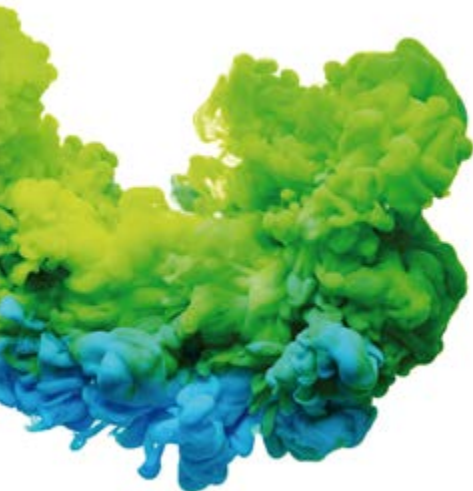


HEAVY PROFESSIONAL WASHER EXTRACTORS

TECHNICAL DATA	UNIT.	HPW-8 V	HPW-8 P	HPW-10 V	HPW-10 P
DRUM					
Load capacity 1:9 / 1:10	Kg	9/8	9/8	11/10	11/10
Volume	l	80	80	100	100
Diameter	mm	532	532	532	532
Depth	mm	360	360	425	425
GENERAL DETAILS					
Washing speed - Spining speed	r.p.m.	50 / 1.250	50 / 1.250	50 / 1.250	50 / 1.250
G FACTOR	-	450	450	450	450
Maximum force transmitted	KN	1,47 ± 0,53	1,47 ± 0,53	1,57 ± 0,53	1,57 ± 0,53
Frequency-dynamic force	Hz	18,33	18,33	18,33	18,33
Coin laundry version	-	Yes	Yes	Yes	Yes
Double drain	-	Yes	No	Yes	No
Noise level	dB	<70	<70	<70	<70
Weighing system /Tilting system	-	No/No	No/No	No/No	No/No
DOOR					
Height center door - Height base door	mm	537 / 280	537 / 280	537 / 280	537 / 280
Diameter	mm	373	373	373	373
POWER					
Motor	kW	0,75	0,75	0,75	0,75
Electric heating power	kW	6	6	6	6
Total electric pwr (electric model)	kW	6,25	6,25	6,25	6,25
Total electric power (hot water model)	kW	0,75	0,75	0,75	0,75
DIMENSIONS - PACKING DIMENSIONS					
Net width / Gross width	mm	680 / 710	680 / 710	680 / 710	680 / 710
Net Depth / Gross Depth	mm	698 / 832	698 / 832	742 / 832	742 / 832
Net Height / Gross Height	mm	1.040 / 1.130	1.040 / 1.130	1.040 / 1.130	1.040 / 1.130
Net weight - Gross weight	kg	140 / 150	140 / 150	150 / 160	150 / 160

HEAVY PROFESSIONAL TUMBLE DRYERS

TECHNICAL DATA	UNIT.	HPD-8	HPD-10	HPDL-10	 HPD-08 HPI	 HPD-10 HPI
CAPACITY & DRUM						
Capacity 1:20	Kg	8	10	10	8	10
Volume	l	160	200	200	160	200
Drum Ø	mm	590	590	590	590	590
Drum depth	mm	585	690	690	585	690
DOOR						
Height center door	mm	554	554	554	918	918
Height base door	mm	320	320	320	684	684
Door Ø	mm	480	480	480	480	480
GENERAL DETAILS						
M control		Electronic	Electronic	Electronic	No	No
Touch II Control		Touch screen 4,3"	Touch screen 4,3"	Not available	Touch screen 4,3"	Touch screen 4,3"
USB connection. Only with TOUCH II		Yes	Yes	No	Yes	Yes
Construction		Skinplate panels	Skinplate panels	White lacquered panels	Skinplate panels	Skinplate panels
Plinth		OPT	OPT	No	HP	HP
Coin laundry version		Yes	Yes	Yes	Yes	Yes
Noise level	dB	62	62	62	61	61
POWER						
Motor	kW	0,37	0,37	0,37	0,37	0,37
Electric heating	kW	4,92 / 7,17	4,92 / 7,17	4,5	2,85	2,85
Gas heating	kW	7	7	7	No	No
CONSUMPTIONS						
Electric heating	kW	4,5 / 6,75	4,5 / 6,75	4,5	No	No
Average propane gas consumption	kg/h	0,45	0,45	0,45	No	No
Average natural gas consumption	m3/h	0,46	0,46	0,46	No	No
OTHERS						
Fume exhaust Ø	mm	100	100	100	No	No
Maximum airflow	m3/hora	300	300	300	-	-
DIMENSIONS - PACKING DIMENSIONS						
Net width / Gross width	mm	680 / 710	680 / 710	680 / 710	680 / 710	680 / 710
Net Depth / Gross Depth	mm	722 / 832	775 / 832	775 / 832	722 / 832	775 / 832
Net Height / Gross Height	mm	1.056 / 1.141	1.056 / 1.141	1.056 / 1.141	1.408 / 1.520	1.408 / 1.520
Net weight - Gross weight	kg	89 / 101	93 / 104	93 / 104	245 / 260	250 / 265



DOMUS

WINNING THE FUTURE THROUGH INNOVATION

C. Energia, 12 - Pol. Ind. La Quintana
08504 Sant Julià de Vilatorca
BARCELONA (SPAIN)

SALES DEPARTMENT

T. +34 93 812 27 96
M. +34 649 482 730
domus@domuslaundry.com
export@domuslaundry.com

AFTER SALES DEPARTMENT

T. +34 93 888 76 73
sat@domuslaundry.com

PARTS DEPARTMENT

T. +34 93 888 76 83
parts@domuslaundry.com



ONNERA GROUP



WWW.DOMUSLAUNDRY.COM

