



TUMBLE DRYERS

ECOVOLUTION
by **DOMUS**

The new state of the art in drying

DOMUS Ecovolution dryers move on with new features on efficiency and connectivity.

Our principles of constant innovation in technology result in a variety of technologically advanced and EFFICIENT machines.

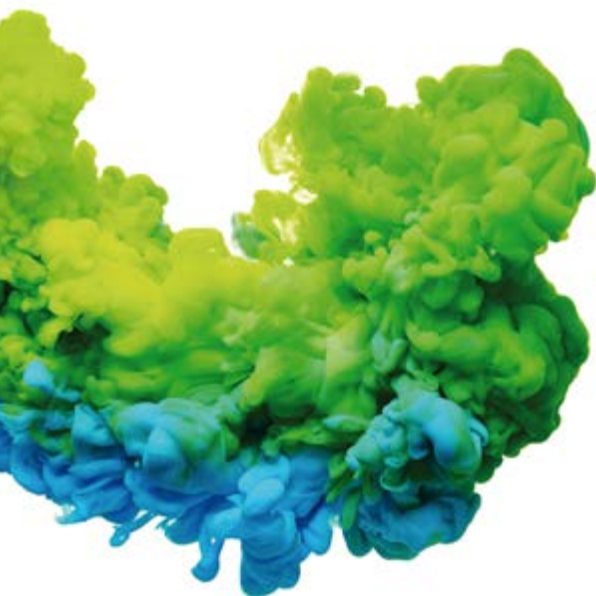
All models have the big 7" touchscreen microprocessor TOUCH II, for great comfort and operation. A wide range: 11, 14, 18, 22, 28, 35, 45, 60 and 80kg. The three largest capacity models have as option the sliding door for easy loading and unloading.

The most efficient range: ECO-ENERGY with AIR RE-CYCLE, EFFICIENT DRY moisture control, THERMAL INSULATION, TOUCH II control, connectivity DOMUS CONNECT as standard as well as WET CLEANING system possibility.

Other ranges like DYNAMIC dryers (EFFICIENT DRY as option) and COMFORT (with M programmer) are versatile and even the ESSENTIAL range features the REVERSE DRUM and INVERTER as standard, for the most price-concerned markets.

STACK dryers have a wide range now: 11, 14, 18 and 22kg models. The new HEAT PUMP - ECO-ENERGY range offers the greatest energy saving features and the advantage of no need of exhaust.

All ranges can be used as OPL or COIN (except ECO ENERGY) by simply making a slight modification in the coiner or connecting them to a central pay or to IOT.



Single pocket



DOMUS ECO-ENERGY | The most efficient

CONTROL TYPE	HEATING	CAPACITY								
		11-12 kg	14-15 kg	17-18 kg	22-24 kg	28-31 kg	33-37 kg	45-50 kg	60-67 kg	75-83 kg
MICROPR. TOUCH II	Electric, gas, steam	DTT-11 ECO-ENERGY	DTT-14 ECO-ENERGY	DTT-18 ECO-ENERGY	DTT-22 ECO-ENERGY	DTT-28 ECO-ENERGY	DTT-35 ECO-ENERGY	DTT-45 ECO-ENERGY	DTT-60 ECO-ENERGY	DTT-80 ECO-ENERGY



DOMUS DYNAMIC

CONTROL TYPE	HEATING	CAPACITY								
		11-12 kg	14-15 kg	17-18 kg	22-24 kg	28-31 kg	33-37 kg	45-50 kg	60-67 kg	75-83 kg
MICROPR. TOUCH II	Electric, gas, steam	DTT-11	DTT-14	DTT-18	DTT-22	DTT-28	DTT-35	DTT-45	DTT-60	DTT-80



DOMUS COMFORT

CONTROL TYPE	HEATING	CAPACITY								
		11-12 kg	14-15 kg	17-18 kg	22-24 kg	28-31 kg	33-37 kg	45-50 kg	60-67 kg	75-83 kg
ELECTRONIC CTRL M	Electric, gas, steam	DTM-11	DTM-14	DTM-18	DTM-22	DTM-28	DTM-35	DTM-45	DTM-60	DTM-80



DOMUS ESSENTIAL

CONTROL TYPE	HEATING	CAPACITY					
		11-12 kg	14-15 kg	17-18 kg	22-24 kg	28-31 kg	33-37 kg
ELECTRONIC CTRL M	Electric, gas	DLM-11	DLM-14	DLM-18	DLM-22	DLM-28	DLM-35

Double pocket: STACK



DOMUS DYNAMIC

CONTROL TYPE	HEATING	CAPACITY				
		11-12 kg	14-15 kg	17-18 kg	17-18 kg	22-24 kg
MICROPR. TOUCH II	Electric, gas	DTT2-11	DTT2-14	DTT2-18	DTT2-18 G TURBO	DTT2-22 G



DOMUS COMFORT

CONTROL TYPE	HEATING	CAPACITY				
		11-12 kg	14-15 kg	17-18 kg	17-18 kg	22-24 kg
ELECTRONIC CTRL M	Electric, gas	DTM2-11	DTM2-14	DTM2-18	DTM2-18 G TURBO	DTM2-22 G



DOMUS ESSENTIAL

CONTROL TYPE	HEATING	CAPACITY				
		11-12 kg	14-15 kg	17-18 kg	17-18 kg	22-24 kg
ELECTRONIC CTRL M	Electric, gas	DLM2-11 STACK	DLM2-14 STACK	DLM2-18 STACK	DLM2-18 G TURBO	DLM2-22 G



Heat pump

DOMUS ECO-ENERGY | The most efficient

CONTROL TYPE	HEATING	CAPACITY			
		11-12 kg	14-15 kg	17-18 kg	22-24 kg
MICROPR. TOUCH II	Heat pump	DTT-11 HPI ECO-ENERGY	DTT-14 HPI ECO-ENERGY	DTT-18 HPI ECO-ENERGY	DTT-22 HPI ECO-ENERGY

NOTE: All models can be easily converted to coin mode, with a coin kit, token kit or for central pay, except 45kg to 80kg models and ECO-ENERGY range.

Single pocket



DTT

ECOENERGY | The most efficient

- ✔ AIR RE-CYCLE: air recovery system for great energy efficiency.
- ✔ EFFICIENT DRY: the intelligent humidity sensor.
- ✔ THERMAL INSULATION: the complete circuit of the air-flow.
- ✔ FULL FLOW: optimized axial-radial air flow.
- ✔ SFEX: Integrated Fire Extinguishing System.
- ✔ Domus connect - standard IOT connectivity.
- ✔ Microprocessor TOUCH II: 7" coloured touch screen.
- ✔ Grey skinplate body, stainless steel look.
- ✔ Big loading door (opening of 180°).
- ✔ REVERSE ACTION: standard in all models.
- ✔ STAINLESS STEEL DRUM standard.
- ✔ SOFT DRY: the new drum with stamped holes.
- ✔ FULL SCREEN FILTER: new filter drawer with wide surface and improved airflow.
- ✔ COOL DOWN: anti-wrinkle at the end of cycle.
- ✔ Models available in electric, gas or steam heating.

OPTIONS

- New perfume dosing system.
- Front tilt on big capacity.
- Sliding door



DTT

DYNAMIC

- ✔ Microprocessor TOUCH II: 7" touchscreen for all models.
- ✔ Domus connect - standard IOT connectivity.
- ✔ Grey skinplate body, stainless steel look.
- ✔ Big loading door (opening of 180°).
- ✔ REVERSE ACTION: standard in all models.
- ✔ STAINLESS STEEL DRUM standard.
- ✔ DOUBLE FLOW: mixed axial-radial airflow.
- ✔ SOFT DRY: the new drum with stamped holes.
- ✔ FULL SCREEN FILTER: new filter drawer with wide surface and improved airflow.
- ✔ COOL DOWN: anti-wrinkle at the end of cycle.
- ✔ Models available in electric, gas or steam heating.

OPTIONS

- EFFICIENT DRY: the intelligent humidity sensor.
- SFEX: Integrated Fire Extinguishing System.
- Double door glass.
- New Perfume dosing system.
- Front tilt on big capacity.
- Sliding door



DTM

COMFORT

- ✔ M programmer: push buttons to control temperature and time.
- ✔ Grey skinplate body, stainless steel look.
- ✔ Big loading door (opening of 180°).
- ✔ REVERSE ACTION: standard in all models.
- ✔ STAINLESS STEEL DRUM standard.
- ✔ DOUBLE FLOW: mixed axial-radial airflow.
- ✔ SOFT DRY: the new drum with stamped holes.
- ✔ FULL SCREEN FILTER: new filter drawer with wide surface and improved airflow.
- ✔ COOL DOWN: anti-wrinkle at the end of cycle.
- ✔ Models available in electric, gas or steam heating.

OPTION

- Display for M programmer.



DLM

ESSENTIAL

- ✔ M programmer: push buttons to control temperature and time.
- ✔ White painted panels. Galvanized drum.
- ✔ Big loading door (opening of 180°).
- ✔ REVERSE ACTION: standard in all models.
- ✔ FULL SCREEN FILTER: new filter drawer with wide surface and improved airflow.
- ✔ COOL DOWN: anti-wrinkle at the end of cycle.
- ✔ Models available in electric or gas heating.

OPTION

- Display for M programmer.



Double pocket: STACK



DTT2 DYNAMIC

- ✔ Microprocessor TOUCH II: 7" color touchscreen.
- ✔ Domus connect - standard IOT connectivity.
- ✔ Grey skinplate body, stainless steel look
- ✔ Big loading door (opening of 180°).
- ✔ REVERSE ACTION: standard in all models.
- ✔ STAINLESS STEEL DRUM Standard
- ✔ DOUBLE FLOW: mixed axial-radial airflow
- ✔ SOFT DRY: the new drum with stamped holes
- ✔ FULL SCREEN FILTER: new filter drawer with wide surface and improved airflow.
- ✔ COOL DOWN: anti-wrinkle at the end of cycle.
- ✔ OPTIONS FOR DTT
 - EFFICIENT DRY: the intelligent humidity sensor.
 - SFEX: Integrated Fire Extinguishing System.
 - Double door glass.
 - Perfume dosing system



DTM2 COMFORT

- ✔ M programmer: push buttons to control temperature and time.
- ✔ Grey skinplate body, stainless steel look
- ✔ Big loading door (opening of 180°).
- ✔ REVERSE ACTION: standard in all models.
- ✔ STAINLESS STEEL DRUM Standard.
- ✔ DOUBLE FLOW: mixed axial-radial airflow.
- ✔ SOFT DRY: the new drum with stamped holes.
- ✔ FULL SCREEN FILTER: new filter drawer with wide surface and improved airflow.
- ✔ COOL DOWN: anti-wrinkle at the end of cycle.
- ✔ OPTIONS FOR DTM
 - Double door glass.
 - Display for M programmer.



DLM2 ESSENTIAL

- ✔ M programmer: push buttons to control temperature and time.
- ✔ White painted panels. Galvanized drum.
- ✔ Big loading door (opening of 180°).
- ✔ REVERSE ACTION: standard in all models.
- ✔ FULL SCREEN FILTER: new filter drawer with wide surface and improved airflow.
- ✔ COOL DOWN: anti-wrinkle at the end of cycle.
- ✔ Models available in electric or gas heating.



Heat pump



DTT HPI ECOENERGY

The most efficient

New range



- ✔ Tumble dryer with HEAT PUMP Technology.
- ✔ Microprocessor TOUCH II: 7" touchscreen.
- ✔ Domus connect - standard IOT connectivity.
- ✔ No need of exhaust to the exterior.
- ✔ Low energy consumption.
- ✔ Grey skinplate body, stainless steel look.
- ✔ Big loading door (opening of 180°).
- ✔ Double doorglass standard.
- ✔ EFFICIENT DRY: the intelligent humidity sensor standard.
- ✔ REVERSE ACTION: standard in all models.
- ✔ STAINLESS STEEL DRUM standard.
- ✔ SOFT DRY: the new drum with stamped holes.
- ✔ FULL SCREEN FILTER: new filter drawer with wide surface.
- ✔ COOL DOWN: anti-wrinkle at the end of cycle.

ECOENERGY



TOUCH II

- ✓ User friendly and totally programmable microprocessor with a 7" **Touch II screen**
- ✓ **DomusConnect** - connectivity standard.
- ✓ **USB Connection.** PC software free of charge for programming, telemetry, data analysis...
- ✓ **Videos shown on display:** ads, instructions. (useful for coin laundry)
- ✓ **Optional:**
New dosing/vaporizing system (softeners/perfumes)



OUTSTANDING FEATURES

- ✓ **Reversing drum action** as standard
- ✓ **Stainless steel drum** as standard
- ✓ **Frequency inverter** as standard
- ✓ **Soft dry** as standard



VERSATILITY

- ✓ **Make to order:** customization
New possibility to customize the machines from factory with the available options
- ✓ **Wet Cleaning**
Possibility to create different phases per program with its customized parameters
- ✓ **Efficient Dry**
- ✓ **OPL <-> Coin laundry**
Standard OPL model easily transformable to coin laundry



MAINTENANCE

- ✓ **Hinged panel**
Easy and ergonomic access to control panel parts
- ✓ **Easy access to parts for reparability**
Dryers are designed to offer an easier maintenance and repair
Example: rear panel in big capacity dryer
- ✓ **Technical menu**
Machine monitoring, machine error warning, management for telemetry and statistics.
Remote desk and data recovery for technicians and maintenance, software update, etc.



ERGONOMICS

- ✓ **Drawer as fluff filter**, made of stainless steel
- ✓ **Big door diameters** Helpful for loading and unloading
- ✓ **Ideal door height for ergonomic opening**
- ✓ **Opening direction of door adjustable on site**
(models 11 to 36 kg)
Opening sense can be changed just turning the front panel and adding a part (longer wire to be ordered)
- ✓ **Reversible door can be ordered for all dryers, factory fitted**
- ✓ **Optional:**
New sliding door in 45kg to 80kg models.
Automatic or manual operation.



EFFICIENCY

- ✓ **EFFICIENT DRY** Intelligent humidity control (includes new drum inlet temperature control)
- ✓ **AIR RE-CYCLE** Efficient air recirculation system
Short drying times, less energy consumption
- ✓ **FULL FLOW** New “optimized” system of mixed airflow
- ✓ **DOUBLE FLOW** Axial radial flow
- ✓ **Big fluff filter**
- ✓ **Thermal insulation**



CONNECTIVITY

- ✓ **DomusConnect** - connectivity standard.
Machine monitoring, machine error warning, management for telemetry and statistics.
Remote desk and data recovery for technicians and maintenance, software update, etc..
- ✓ **Management for laundries:** OPL and COIN
Our DOMUS IoT solution allows you to manage your laundry business (i.e. create discount programs for customers, get statistics, telemetry and laundry monitoring).
- ✓ **Remote payment:** App for payments, cashless payment by scanning a QR code, promotions and machine booking





Programmable microprocessor TOUCH II

TOUCH II: user friendly 7" touchscreen

Fully programmable: 20 preset programs and possibility to create infinite more. New programs can be created, exported, imported (by usb or standard IoT).

Videos on display

Ads, instructions
(useful for coin laundries)



TOUCH II evolves with DOMUS Connect: full remote control to ensure telemetry, easy maintenance and business management features.

Dosing/ vaporizing system



37 languages

Available and easy to configurate, thanks to DOMUS aim to be accessible to everyone.



USB Connection

Online platform free of charge for programming, software updates, telemetry, data analyse...

M programmer

Push buttons to control temperature and time. Simple and user friendly. Programmable with external console (optional). New display as option.





EFFICIENCY

RANGE

ECOENERGY

A RANGE WITH ALL EFFICIENT FEATURES AS STANDARD

Air Re-Cycle

Efficient air recovery system. Short drying times, less energy consumption.



Efficient Dry

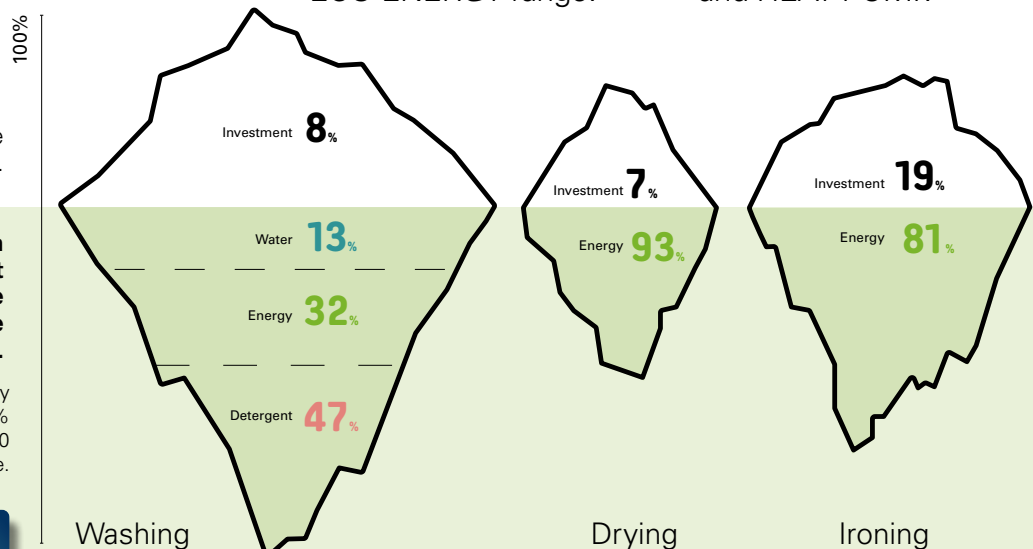
Intelligent humidity control (standard in ECO-ENERGY and as option in DYNAMIC).



In a laundry, the machines are the visible part of an iceberg.

At Domus we pay attention to the iceberg part that cannot be seen, to optimize the expenses during the whole Life Cycle Cost.

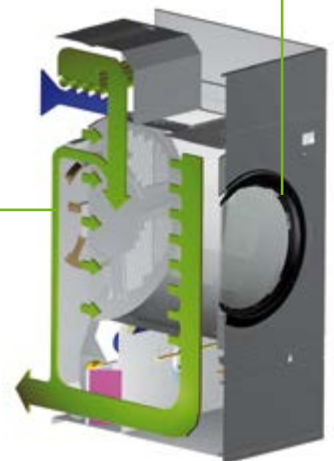
Example of a standard laundry with 50% flat linen and 50% towelling, during the first 10 years of life.



The new ECOEVOLUTION technology, especially in HEAT PUMP and ECOENERGY tumble dryers, offer a wide variety of standard efficient features to provide important energy savings.

Thermal insulation

Insulated panels to avoid loss of heat



Drum inlet temperature control

A more accurate temperature control in the drum.

Full Flow

New "optimized" system of mixed airflow in ECO-ENERGY range.

Double Flow

Axial radial airflow in DYNAMIC, COMFORT and HEAT PUMP.



Temperature



Air flow



Cycle time



Machine design

100% Efficiency

HEAT PUMP ECOENERGY

A NEW RANGE OF
HEAT PUMP DRYERS.
THE MOST EFFICIENT.



Low power

The heat pump dryer consumes 1/5 of the installed power compared to an electric equivalent dryer.

Efficient

It uses less than 0.5 kw/litre of evaporated water

Optimized cycle time

Full load of 100% cotton towels

Industrial dryer → 63 minutes

60% load, 50% polyester 50% cotton towels.

Industrial dryer → 32 minutes

ELECTRIC DRYER

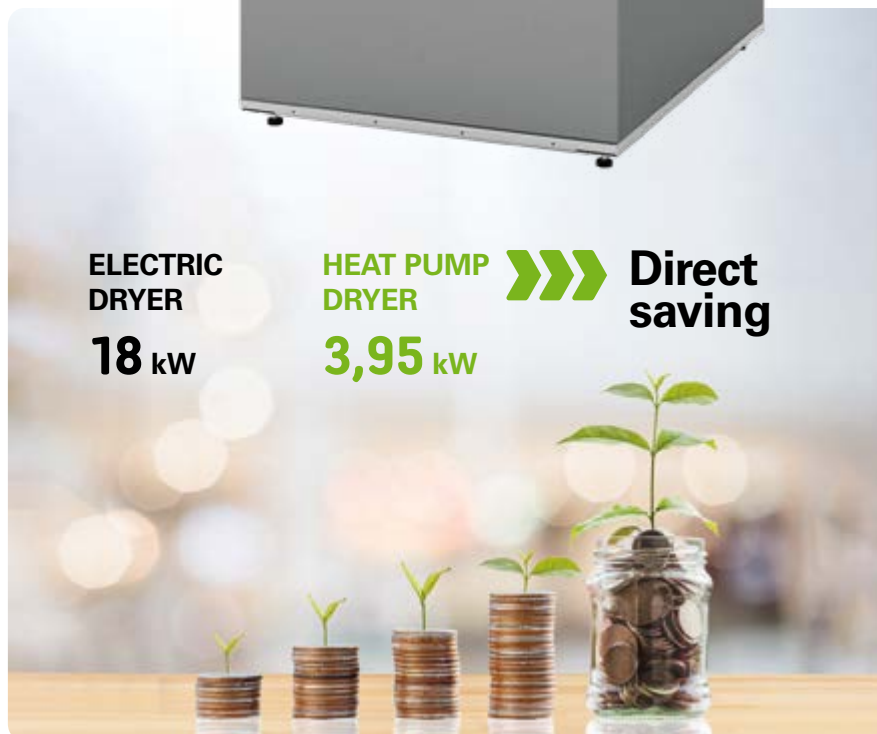
18 kW

HEAT PUMP DRYER

3,95 kW



Direct saving





VERSATILITY

To adapt to the needs of the different businesses.

Make to order: **customization**

New possibility to customise the machine from factory with the available options.

Wet Cleaning[®]

The best dryer for Wet Cleaning.

- ✔ Fully programmable control: possibility to program by phases
- ✔ Accurate control of in and out temperatures
- ✔ Precise humidity programming
- ✔ Adjustable drum speed

Efficient Dry

Intelligent humidity control: It adapts the drum's spinning speed to the moisture level in each drying phase (standard in ECO-ENERGY and as option in DYNAMIC).



OPL <> COIN

Easy transformation from OPL to self-service.

Several payment systems available:

1



Coin / Token

in washers and dryers: mechanical token, mechanical coiner and electronic coiner.



DOMUS tumble dryers between 11 and 35 kg are specially designed to be used for coin laundry business.

C&G

2



DOMUS LAUNDRY payment APP.

Payment by means of a third party app or our app, with Stripe to pay with the mobile.

3



External device

By means of an external device, which communicates with the machines. For example a **central pay**.

Several ways to connect:

by pulses, by RS-485 protocol or by the IoT.





CONNECTIVITY

THE INTERNET OF THINGS

The **IoT connection is easy and free**, standard on all ranges with TOUCH II



IoT Features

MANAGEMENT

- Management of washing and drying programs and phases
- Configurable statistics, cycles carried out, income (Coin), errors, productions, production reports and water, chemical and energy consumption, workloads, etc.
- Creation of daily, weekly reports, etc. Sending by email with the information and statistics.
- **Telemetry**: storage and access of all data and signals from the machines for later use and consultation (times, temperatures, errors, water levels, dosages, speeds, etc.). Very useful for users, technical services, chemists, etc.
- Machine configurations
- Remote desktop control of machines
- Geolocation

SELF-SERVICE

- Own and free app for iOS and Android: Manage the reservation and payment of the programs in your laundry. It allows you to search for laundries and add them to favourites, find out the status of the machines in real time, book and pay for washing or drying, receive notifications by push or email when the program has finished or is about to end, view your operations, receive discounts and promotions...

TECHNICAL SERVICE

- Access to technical documentation, videos, manuals, exploded views, electrical diagrams, etc.
- Configuration of sending notifications and errors.
- Management of interventions.

Important advantages for all the actors involved

DOMUSCONNECT



Owner / end user

Improves usability, efficiency and comfort.
 Business control: configurable reports of production, cycles, consumption, revenue,...
 Ensure the washing and drying processes, ensure hygiene and disinfection, washing quality...

+ information + security + control

Telemetry

Custom graphics for monitoring of your business



Dealer

Technological base for new business (renting, maintenance contracts, self-services...)
 Databases of installed machines (geographical distribution, models...).

Added value of DOMUSConnect machines for the customer.

+ opportunity + information + added value



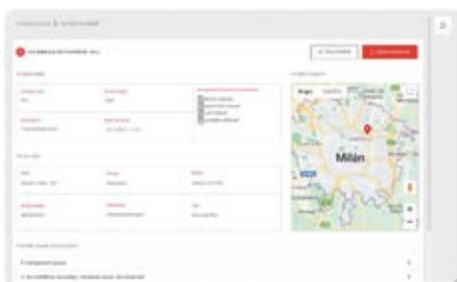
Technical service

Improvement of customer service
 Improvement of processes (more efficient and lower costs) avoiding unnecessary trips.
 Remote troubleshooting and maintenance programs.
 Telemetry and complete information of all the programs carried out.

Access to technical documentation, videos, etc.

+ efficiency + support + information

SAT- trouble shooting



Chemical partners

Management and creation of washing and drying programs (online and offline).

Ensure the washing and drying processes, ensure hygiene and disinfection, washing quality...

Troubleshooting and remote management.
 Telemetry and complete information of all the programs carried out.

+ information + management + ease



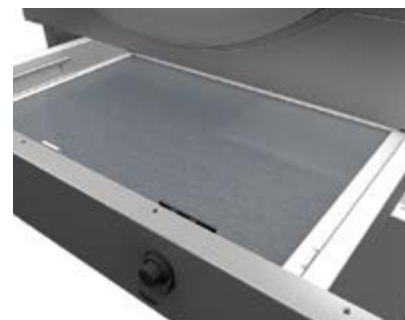
ERGONOMICS

Opening sense of the door adjustable on site

Opening sense can be easily changed in models 11 to 36 kg. It can also be ordered from factory.

Biggest door diameters

Helpful for loading and unloading



Big fluff filter

Drawer with stainless steel grid, easy to open and clean



We take care of you as well as your clothes and your business.



Front tilt system

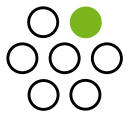
in DTT-45 to 80.



Sliding door for an easy unloading and loading operation

Automatic and manual options





OUTSTANDING FEATURES

Reversing drum action

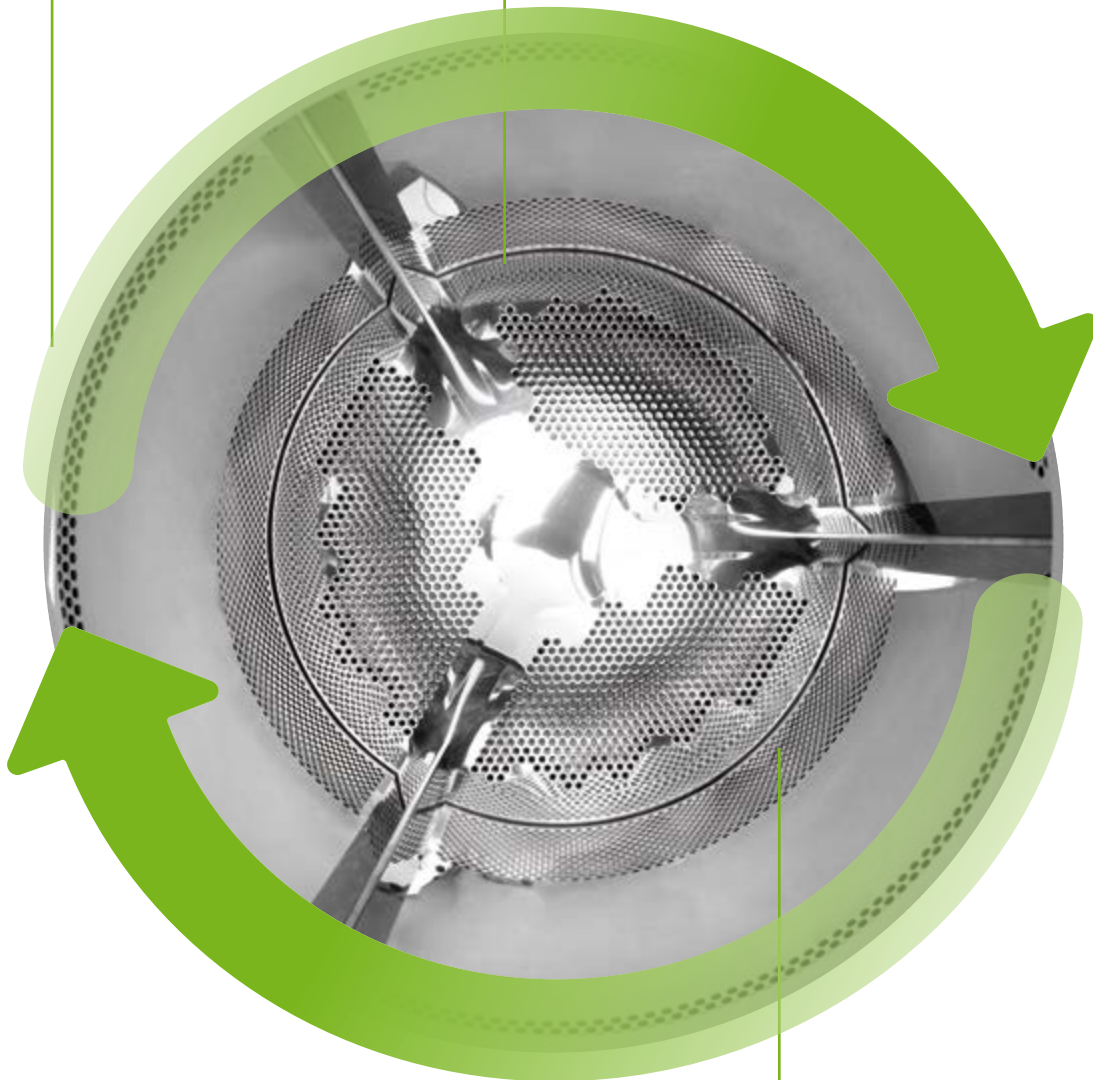
as standard

Stainless steel drum

as standard except
ESSENTIAL range

Frequency inverter

as standard



Soft Dry

Stamped drum
holes, to lengthen
the linen lifetime



MAINTENANCE

One of DOMUS concerns is to make life easier for our clients. That includes offering quality equipment and parts of reputed brands, which demand little maintenance.



Easy access to parts

Dryers are designed to offer an easy maintenance and reparability

Hinged panel

Easy and ergonomic access to control panel parts

Technical menu

Machine monitoring, machine error warning, management for telemetry and statistics. Remote desk and data recovery for technicians and maintenance, software update, etc.

Equivalent parts

Most key parts are the same for all models (contactors, electronic devices, gear,...)



INDUSTRIAL LAUNDRY EQUIPMENT

Equipment with the latest technology, ideal for industrial laundries for all type of businesses and sectors. Washers and dryers that share the TOUCH II control and advanced features.



Sliding door as option in dryers

DTT-45 to DTT-80
TOUCH II





CONNECTIVITY

All Domus dryers with TOUCH II are equipped with DomusConnect as standard, so you can have remote access to all the machines data, analyse your equipment and have full control of your business.



EFFICIENCY

Large capacity tumble dryers are the most efficient in the market thanks to their design and features such as the humidity control which shortens the drying cycle, reducing the energy consumption considerably. Other features like the thermal insulation and the air recovery contribute to reach great energy savings.

ECOTANK XL

New centralized 1.000 litres water tanks for one or more machines, 1 to 3 units available.



Industrial washers

DHS-45C to DHS-120C
TOUCH II



Tumble dryers technical data

	UNIT.	DTT/DTM/ DLM-11	DTT/DTM/ DLM-14	DTT/DTM/ DLM-18	DTT/DTM/ DLM-22	DTT/DTM/ DLM-28	DTT/DTM/ DLM-35	DTT/DTM-45	DTT/DTM-60	DTT/DTM-80
MODEL										
Capacity 1/18	Kg	11,7	15	18,3	24,3	30,5	36,6	49,8	66,8	83,3
Capacity 1/20	Kg	10,5	13,5	16,5	21,9	27,5	33	44,8	60,1	75
Hourly Output ECO-ENERGY*	Kg/h	31,3	32,5	33,6	44,6	61,10	73,3	96	144	187,5
Hourly Output DYNAMIC-COMFORT-ESSENTIAL*	Kg/h	28,6	30,3	31,9	40	59,3	63,9	84,4	128,6	173,1
Evaporation capacity ECO-ENERGY*	l/h	15	15,6	16,3	22,3	31,8	34,7	48	72	93,8
Evaporation capacity DYNAMIC-COMFORT-ESSENTIAL*	l/h	14,5	15,4	16,3	20	30,9	32,1	42,5	65,8	86,5
DRUM										
Ø Drum	mm	750	750	750	835	947	947	1225	1225	1225
Ø Door	mm	574	574	574	574	802	802	802	802	802
Door center height	mm	976	976	976	1030	1040	1040	1275	1275	1275
Load hole bottom height	mm	689	689	689	743	640	640	874	874	874
Drum length	mm	475	610	746	800	780	936	760	1020	1252
Drum volume	l	210	269	330	438	549	659	896	1202	1500
POWER										
Drum motor power	KW	0,37	0,37	0,37	0,37	0,55	0,55	0,75	1,1	1,5
Fan Motor Power ECO-ENERGY	KW	0,55	0,55	0,55	0,75	0,75	0,75	2,2	2,2	2,2
Fan Motor Power DYNAMIC-COMFORT-ESSENTIAL	KW	0,25	0,25	0,25	0,55	0,55	0,55	1,1	1,1	1,1
Electric heating power ALL RANGES	KW	12	18	18	24	30	36	54	72	72
Total elec. power (elec. mod.) ECO-ENERGY	KW	12,97	18,97	18,97	25,17	31,35	37,35	57	75,35	75,75
Total elec. power (elec. mod.) DYN-COMF-ESSENT	KW	12,67	18,67	18,67	24,97	31,15	37,15	55,9	74,25	74,65
Gas heating power ALL RANGES	KW	20,51	20,51	20,51	31	41	41	60	90	120
Total elec. power (gas mod.) ECO-ENERGY	KW	0,97	0,97	0,97	1,17	1,35	1,35	3	3,35	3,75
Total elec. power (gas mod.) DYN-COMF-ESSENT	KW	0,67	0,67	0,67	0,97	1,15	1,15	1,9	2,25	2,65
Steam heating power ALL RANGES	KW	30	30	30	49,2	50,1	50,1	91,3	128	128
Total elec. power (steam mod.) ECO-ENERGY	KW	0,97	0,97	0,97	1,17	1,35	1,35	3	3,35	3,75
Total elec. power (steam mod.) DYN-COMF-ESSENT	KW	0,67	0,67	0,67	0,97	1,15	1,15	1,9	2,25	2,65
DIMENSIONS										
Net dimensions (W x D x H)	mm	785x855x1694	785x989x1694	785x1125x1694	890x1255x1812	985x1054x1975	985x1210x1975	1270x1106x2380	1270x1366x2380	1270x1598x2380
Gross dimensions (W x D x H)	mm	865x940x1840	865x1074x1840	865x1210x1840	970x1345x1940	1065x1154x2080	1065x1310x2080	1330x1185x2150	1330x1455x2150	1330x1705x2150
Net Weight	Kg	172	180	187	210	230	260	395	529	657
Gross Weight	Kg	180	190	200	230	260	285	430	575	715
OTHERS										
Max airflow ECO-ENERGY	m³/h	1200	1200	1200	1500	1500	1500	4500	4500	4500
Max air flow DYNAMIC-COMFORT-ESSENTIAL	m³/h	850	850	850	1200	1200	1200	3000	3000	3000
Ø fume exhaust	mm	200	200	200	200	200	200	300	300	300
Noise level	dB	64	64	64	65	65	65	67	67	67
ECO-ENERGY-TOUCH II DYNAMIC - TOUCH II COMFORT - M ESSENTIAL - M										
Touch II			X		X		-		-	
IoT – Domus Connect			X		X		-		-	
M Electronic programmer			-		-		X		X	
Autoreverse drum			X		X		X		X	
Inverter			X		X		X		X	
Outer casing in grey skinplate			X		X		X		-	
White coated external panels			-		-		-		X	
Stainless Steel drum			X		X		X		-	
Galvanized drum			-		-		-		X	
Soft DRY			X		X		X		-	
DOUBLE FLOW (Axial+Radial)			-		X		X		-	
FULL FLOW (Optimized axial+radial Flow)			X		-		-		-	
Radial Air Flow			-		-		-		X	
EFFICIENT DRY intelligent moisture control + temperature sensor			X		OPT.		-		-	
AIR RECYCLE (Air recycling system)			X		-		-		-	
THERMAL INSULATION - Insulated panels			X		-		-		-	
Double door glass			X		OPT.		OPT.		-	
SFEX			X		OPT.		-		-	
Dosing/Vaporising system (softeners/perfumes)			OPT.		OPT.		-		-	
Drum Inlet Temperature control			X		OPT. with EFFICIENT DRY		-		-	

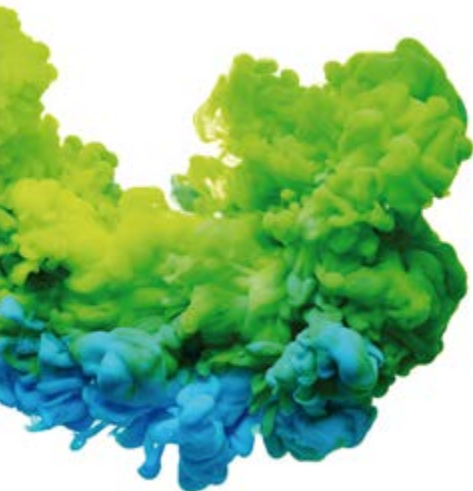
*The indicated value corresponds to the Gas heated model.

Tumble dryers technical data



UNIT.	DTT2/DTM2/ DLM2-11	DTT2/DTM2/ DLM2-14	DTT2/DTM2/ DLM2-18	DTT2/DTM2/ DLM2-18TURBO	DTT2/DTM2/ DLM2-22	DTT-11 HEAT PUMP	DTT-14 HEAT PUMP	DTT-18 HEAT PUMP	DTT-22 HEAT PUMP	
MODEL										
Capacity 1/18	Kg	12 x 2	15 x 2	18 x 2	18 x 2	24 x 2	11,7	15,0	18,3	24,3
Capacity 1/20	Kg	11 x 2	14 x 2	17 x 2	17 x 2	22 x 2	10,5	13,5	16,5	21,9
Hourly Output*	Kg/h	30,6	33,8	36	70,7	88	14,4	14,8	15,0	16,6
Evaporation capacity*	l/h	15,3	16,9	18	35,3	44	7,2	7,4	7,50	8,3
DRUM										
Ø Drum	mm	750	750	750	750	835	750	750	750	835
Ø Door	mm	574	574	574	574	574	574	574	574	574
Door center height	mm	547 / 1522	547 / 1522	547 / 1522	547 / 1522	574/1618	976	976	976	1030
Load hole bottom height	mm	260 / 1235	260 / 1235	260 / 1235	260 / 1235	272/1322	689	689	689	743
Drum length	mm	475	610	746	746	800	475	610	746	800
Drum volume	l	210	269	330	330	438	210	270	330	438
POWER										
Drum motor power	KW	0,37 x 2	0,37 x 2	0,37 x 2	0,37 x 2	0,37 x 2	0,37	0,37	0,37	0,37
Fan Motor Power	KW	0,25 x 2	0,25 x 2	0,25 x 2	0,55 x 2	0,55 x 2	0,17	0,17	0,17	0,17
Heating installed power	KW	12 x 2	12 x 2	12 x 2	-	-	-	-	-	-
Heat. installed power (electric mod.)	KW	25,34	25,34	25,34	-	-	3,95	3,95	3,95	3,95
Heat. installed power (gas mod.)	KW	12 x 2	12 x 2	12 x 2	24 x 2	30,4 x 2	-	-	-	-
Installed electric power (gas)	KW	1,34	1,34	1,34	1,94	1,94	-	-	-	-
DIMENSIONS										
Net dimensions (W x D x H)	mm	785x972x1980	785x1106x1980	785x1242x1980	785x1443x1980	870x1328x2117	785x989x1694	785x1029x1694	785x1125x1694	890x1255x1812
Gross dimensions (W x D x H)	mm	865x1055x2126	865x1189x2126	865x1325x2126	865x1457x2126	950x1411x2250	865x1074x1840	865x1114x1840	865x1210x1840	970x1345x1940
Net Weight	Kg	260	275	290	320		310	315	322	345
Gross Weight	Kg	268	293	317	349		318	325	335	365
OTHERS										
Max Air Flow	m³/h	500 x 2	500 x 2	500 x 2	750 x 2	900 x 2	variable	variable	variable	variable
Ø fume exhaust	mm	200	200	200	200 x 2	250	NO	NO	NO	NO
Noise level	dB	64	64	64	64	69	61	61	61	61

	DYNAMIC-TOUCH II	COMFORT – M	ESSENTIAL – M	ECO-ENERGY
	STACK	STACK	STACK	HEAT PUMP
Touch II	X	-	-	X
IoT – Domus Connect	X	-	-	X
M Electronic programmer	-	X	X	-
Autoreverse drum	X	X	X	X
Inverter	X	X	X	X
Outer casing in grey skinplate	X	X	-	X
White coated external panels	-	-	X	-
Stainless Steel drum	X	X	-	X
Galvanized drum	-	-	X	-
Soft DRY	X	X	-	X
DOUBLE FLOW (Axial+Radial)	X	X	-	X
FULL FLOW (Optimized axial+radial Flow)	-	-	-	-
Radial Air Flow	-	-	X	-
EFFICIENT DRY intelligent moisture control + temperature sensor	OPT.	-	-	X
AIR RECYCLE (Air recycling system)	-	-	-	-
THERMAL INSULATION - Insulated panels	-	-	-	X
Double door glass	OPT.	OPT.	-	X
SFEX	OPT.	-	-	-
Dosing/Vaporising system (softeners/perfumes)	OPT.	-	-	-
Drum Inlet Temperature control	OPT. with EFFICIENT DRY	-	-	-



DOMUS

WINNING THE FUTURE THROUGH INNOVATION

C. Energia, 12 - Pol. Ind. La Quintana
08504 Sant Julià de Vilatorça
BARCELONA (SPAIN)

SALES DEPARTMENT

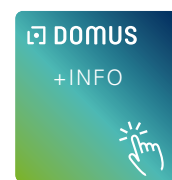
T. +34 93 888 71 53
M. +34 649 482 730
domus@domuslaundry.com
export@domuslaundry.com

AFTER SALES DEPARTMENT

T. +34 93 888 76 73
sat@domuslaundry.com

PARTS DEPARTMENT

T. +34 93 888 76 83
parts@domuslaundry.com



ONNERA GROUP



WWW.DOMUSLAUNDRY.COM

